



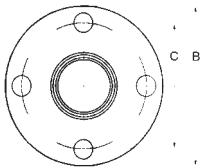
FLANGES - 125 LB COMPANION

with A.S.M.E. Drilling

Copper to Flange

Cast

CP41-125-



Mueller: -- wrot
F-940 cast

Elkhart: -- wrot
4741 cast

Nibco: -- wrot
741 cast

Item No.	Nom. Size (in inches)	Mstr Crtn	Net Wt. Approx.	Bolt Hole Dia	No. Bolt Hols	Dim A	Dim B	Dim C
CP41-125-08	1/2	25	.57	5/8	4	3/16	3-1/2	2-3/8
CP41-125-12	3/4	25	.73	5/8	4	3/16	3-7/8	2-3/4
CP41-125-16	1	25	1.07	5/8	4	1/4	4-1/4	3-1/8
CP41-125-20	1-1/4	20	1.71	5/8	4	1/4	4-5/8	3-1/2
CP41-125-24	1-1/2	12	1.64	5/8	4	5/16	5	3-7/8
CP41-125-32	2	8	2.97	3/4	4	3/8	6	4-3/4
CP41-125-40	2-1/2	4	3.48	3/4	4	3/8	7	5-1/2
CP41-125-48	3	4	4.88	3/4	8	7/16	7-1/2	6
CP41-125-56	3-1/2	2	5.99	3/4	8	7/16	8-1/2	7
CP41-125-64	4	2	6.96	3/4	8	7/16	9	7-1/2
CP41-125-80	5	2	10.43	7/8	8	7/16	10	8-1/2
CP41-125-96	6	2	12.77	7/8	8	1/2	11	9-1/2
CP41-125-99	8	2	26.91	7/8	8	5/8	13-1/2	11-3/4

PRESSURE FITTINGS
Elbow / Flange

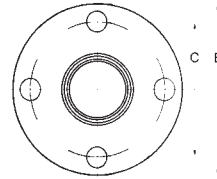
FLANGES - 150 LB COMPANION

with A.S.M.E. Drilling

Copper to Flange

Cast

CP41-150-



Mueller: -- wrot
F-900 cast

Elkhart: -- wrot
4771 cast

Nibco: -- wrot
771 cast

Item No.	Nom. Size (in inches)	Mstr Crtn	Net Wt. Approx.	Bolt Hole Dia	No. Bolt Hols	Dim A	Dim B	Dim C
CP41-150-08	1/2	35	.92	5/8	4	5/16	3-1/2	2-3/8
CP41-150-12	3/4	25	1.27	5/8	4	11/32	3-7/8	2-3/4
CP41-150-16	1	20	2.62	5/8	4	3/8	4-1/2	3-1/8
CP41-150-20	1-1/4	15	2.15	5/8	4	13-32	4-5/8	3-1/2
CP41-150-24	1-1/2	10	2.50	5/8	4	7/16	5	3-7/8
CP41-150-32	2	8	3.79	3/4	4	1/2	6	4-3/4
CP41-150-40	2-1/2	4	6.21	3/4	4	9/16	7	5-1/2
CP41-150-48	3	4	7.07	3/4	4	5/8	7-1/2	6
CP41-150-56	3-1/2	2	10.04	3/4	4	11/16	8-1/2	7
CP41-150-64	4	2	11.80	3/4	8	11/16	9	7-1/2
CP41-150-80	5	2	16.90	7/8	8	3/4	10	8-1/2
CP41-150-96	6	2	20.00	7/8	8	13/16	11	9-1/2
CP41-150-99	8	1	41.00	7/8	8	15/16	13-1/2	11-3/4

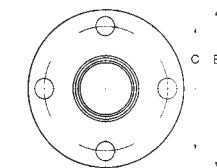
FLANGES - 300 LB COMPANION

with A.S.M.E. Drilling (consult factory regarding OD sizes)

Copper to Flange

Cast

CP41-300-



Mueller: -- wrot
-- cast

Elkhart: -- wrot
-- cast

Nibco: -- wrot
-- cast

Item No.	Nom. Size (in inches)	Mstr Crtn	Net Wt. Approx.	Bolt Hole Dia	No. Bolt Hols	Dim A	Dim B	Dim C
CP41-300-08	1/2	1	1.75	5/8	4	1/2	3-3/4	2-5/8
CP41-300-16	1	1	3.71	3/4	4	19/32	4-7/8	3-1/2
CP41-300-20	1-1/4	1	6.27	3/4	4	5/8	5-1/4	3-7/8
CP41-300-24	1-1/2	1	6.61	7/8	4	11/16	6-1/8	4-1/2
CP41-300-32	2	1	7.96	3/4	8	3/4	6-1/2	5
CP41-300-40	2-1/2	1	9.35	7/8	8	13/16	7-1/2	5-7/8
CP41-300-48	3	1	11.92	7/8	8	29/32	8-1/4	6-5/8
CP41-300-64	4	1	23.40	7/8	8	1-1/16	10	7-7/8
CP41-300-80	5	1	27.30	7/8	8	1-1/8	11	9-1/4
CP41-300-96	6	1	41.50	7/8	12	1-3/16	12-1/2	10-5/8